

(Figure 3).

We are currently developing a web-based irrigation tool as an aid for water management. The tool was recently demonstrated during an irrigation workshop at the Stripling Research Irrigation Park. The University of Georgia also participates in the Southeast Climate Consortium to provide long-term climate and agricultural outlooks. Climate information is disseminated via the web at www.AgroClimate.org. County specific information and a yield tool are also available.

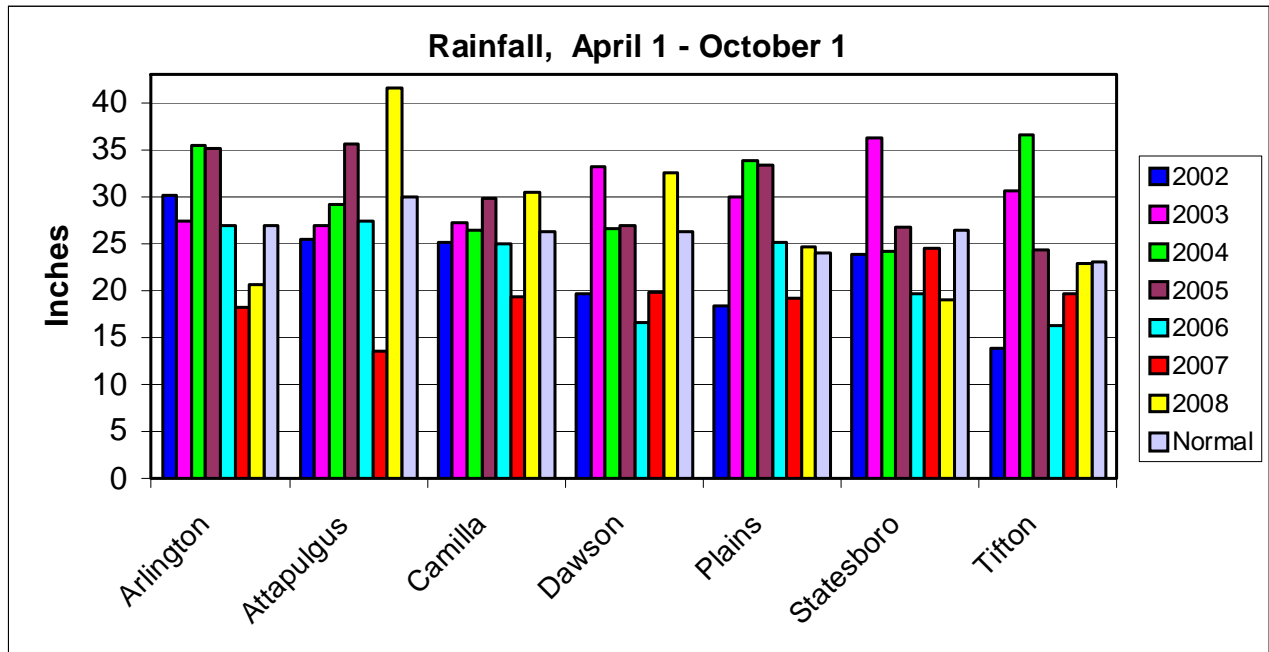


Figure 2. Rainfall totals for April 1 to October 1 for 2002 through 2008 as compared to normal conditions for 1971 to 2000.

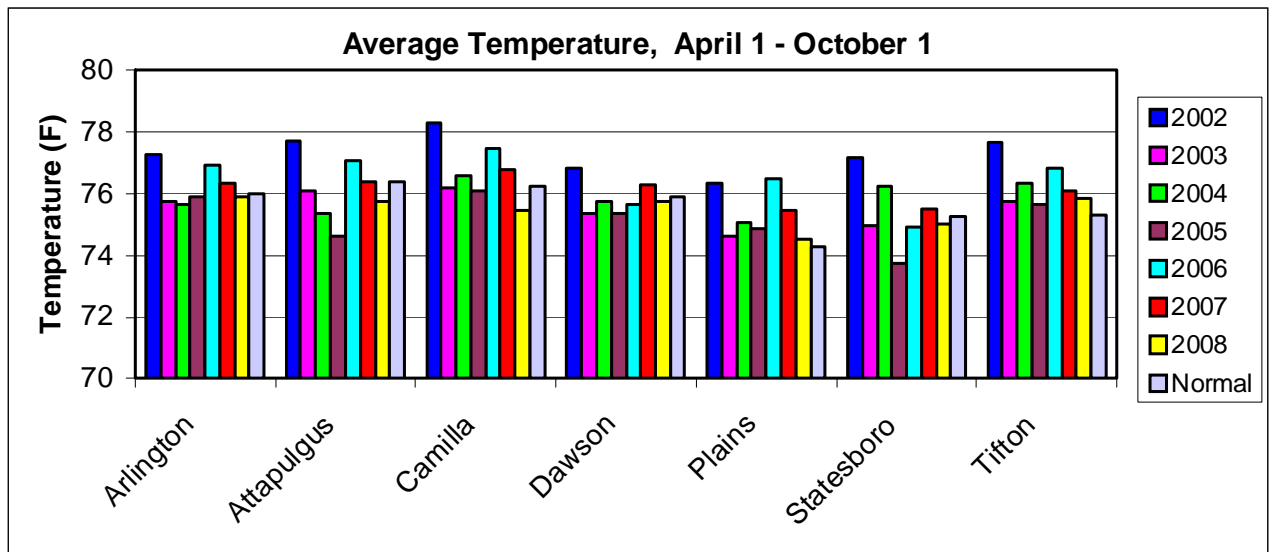


Figure 3. Average temperature for April 1 through October 1 for 2002 through 2008 as compared to normal conditions for 1971 to 2000.